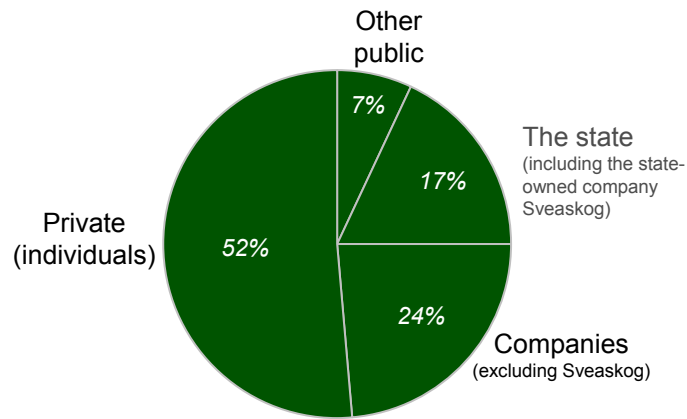
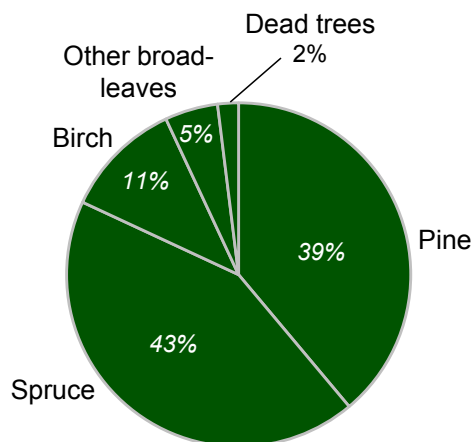


## Forest owners in Sweden



Source: National Board of Forestry

## Swedish timber stocks by tree species



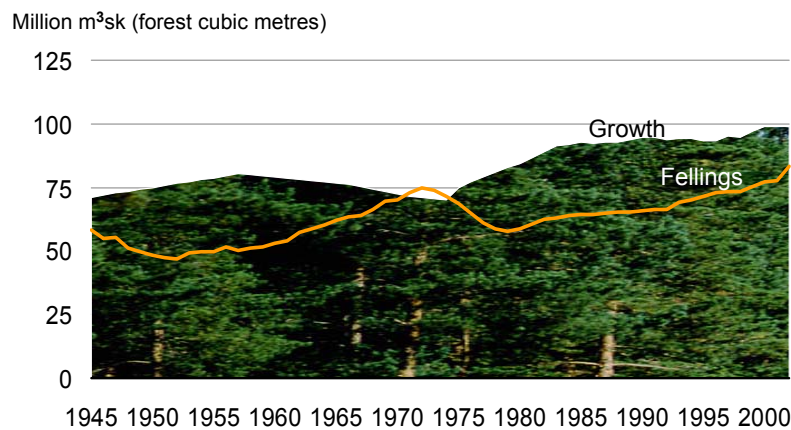
Source: National Forest Survey

## Swedish forestry



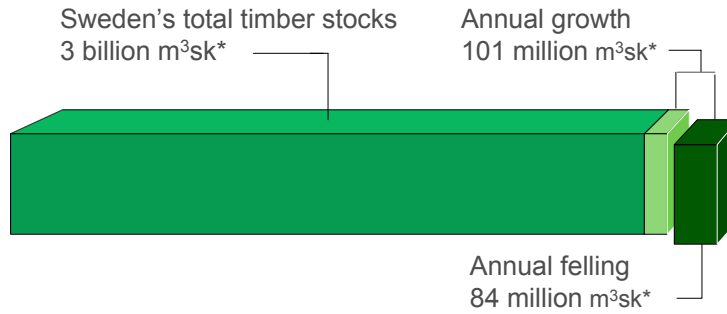
Photo: Stora Enso

## Annual growth and felling in Sweden



Source: National Forest Survey, National Board of Forestry

## Growth exceeds felling in Sweden

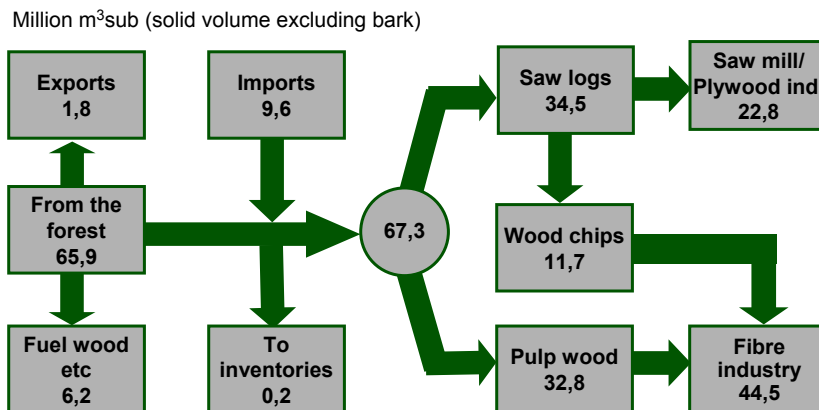


\*) m<sup>3</sup>sk = cubic metre standing volume (stem volume over bark from stump to top) – year 2002



Source: National Forest Survey, National Board of Forestry

## Supply of raw materials to the Swedish forest industries

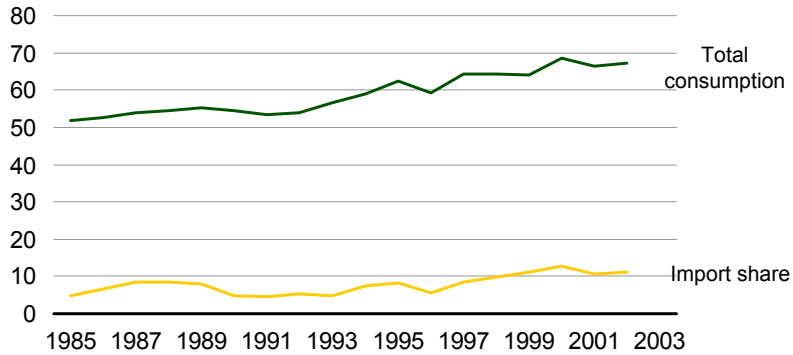


Figures for 2002

Source: Timber Measurement Council

## Wood consumption by the Swedish forest industry

Milj. m<sup>3</sup>fub (solid volume excluding bark)



Source: Statistics Sweden, Timber Measurement Council

## 95 per cent of the trunk is put to use

